

И. С. Бах

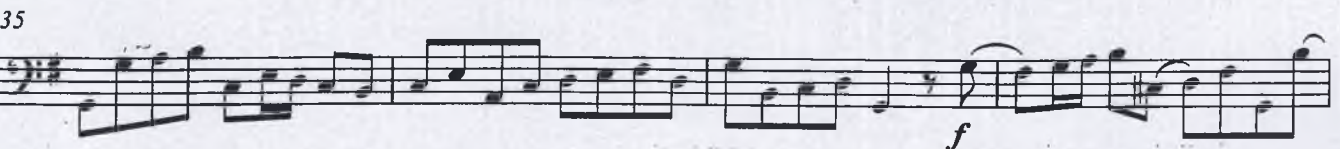
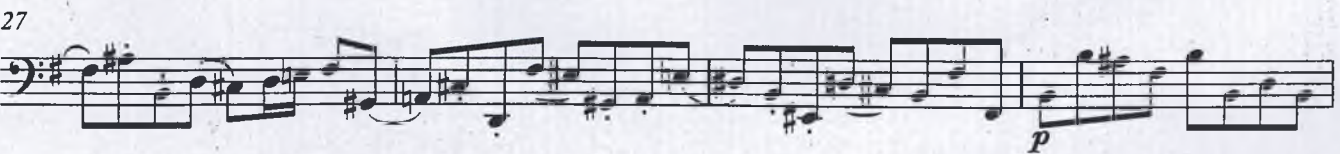
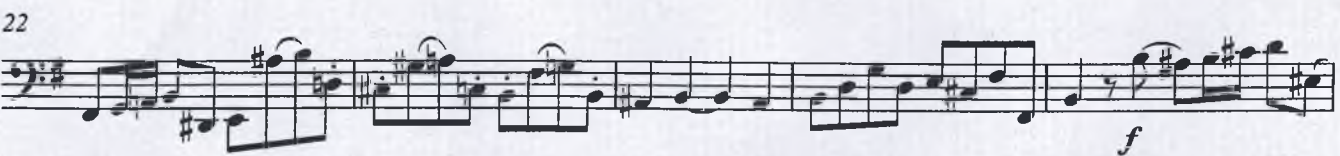
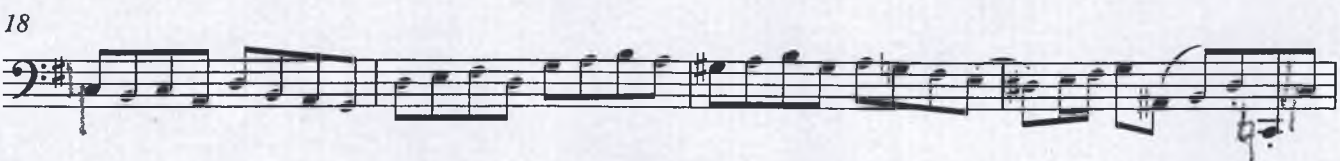
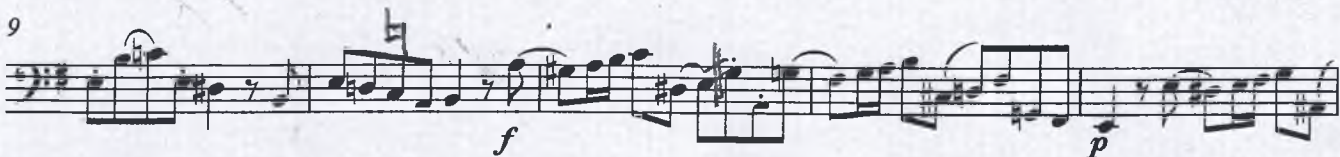
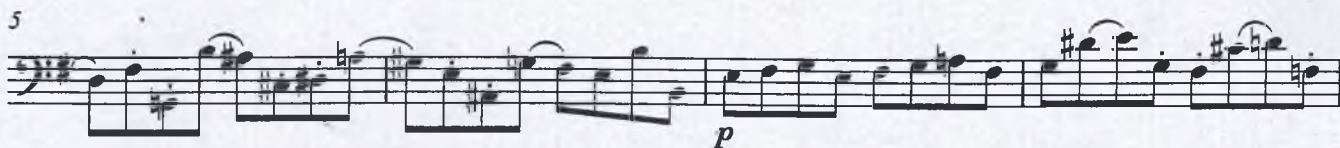
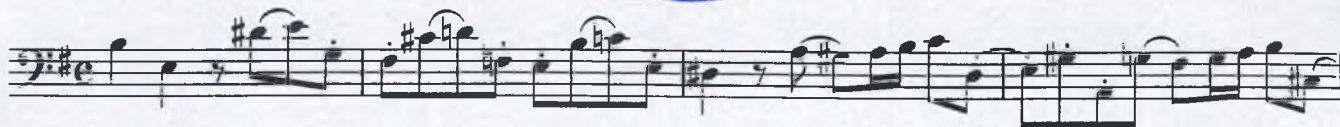
«Коринная кантата»

cello

Continuo

8

Aria



Continuo

39

*p*

Measure 39: Bass clef, key signature of one sharp (F#). The staff contains a melodic line with eighth and sixteenth notes, some beamed together. A dynamic marking of *p* (piano) is placed below the staff.

43

Measure 43: Bass clef, key signature of one sharp (F#). The staff contains a melodic line with eighth and sixteenth notes, some beamed together.

48

*pp*

Measure 48: Bass clef, key signature of one sharp (F#). The staff contains a melodic line with eighth and sixteenth notes, some beamed together. A dynamic marking of *pp* (pianissimo) is placed below the staff.

52

*f*

Measure 52: Bass clef, key signature of one sharp (F#). The staff contains a melodic line with eighth and sixteenth notes, some beamed together. A dynamic marking of *f* (forte) is placed below the staff.

56

Measure 56: Bass clef, key signature of one sharp (F#). The staff contains a melodic line with eighth and sixteenth notes, some beamed together.

Recit

Measure 1: Recitativo style. The staff is in bass clef with a key signature of one sharp (F#). It features a series of eighth and sixteenth notes, some with slurs, and rests.

6

Measure 6: Recitativo style. The staff is in bass clef with a key signature of one sharp (F#). It features a series of eighth and sixteenth notes, some with slurs, and rests.

10

Measure 10: Recitativo style. The staff is in bass clef with a key signature of one sharp (F#). It features a series of eighth and sixteenth notes, some with slurs, and rests.